

**ENSYSTEX™**

LEADING INNOVATION IN PEST MANAGEMENT



**WORLD CLASS  
INNOVATION  
AND PRODUCT DISCOVERY**

**PRODUCT INFORMATION  
2019/20**

## ABOUT ENSYSTEX

Ensystem is a global, research-based company focused on providing **environmentally responsible, effective, urban pest management solutions** and has achieved a high international reputation for these products.

Our commitment to the pest management industry is displayed through the team of dedicated professionals employed in South Africa.

Ensystem develops and owns all its own formulations, performs QA and batch analysis checks on all batches of chemicals and guarantees the consistent quality of all materials sold. Ensystem is a true specialist in professional pest management for the urban and public health environment.

## YOU CALL - WE JUMP

We're all aware that working in today's tough, demanding, fast forward environment, when a problem comes up, it can make life very difficult. That's why Ensystem has a strong "help" line, dedicated to our valued clients.

If you have any technical questions or require technical support all you have to do is call **080 367 9783** and follow any prompts. We then guarantee that one of our technical support specialists will call you back within 2 hours of your call being placed to assist with the matter.

**This support is available 24 hours a day, 365 days a year!**

## YOUR ENSYSTEX GUARANTEE

If any Ensystem product fails to meet or exceed your expectations, return the unused portion in the container, at our expense, and we will issue you with a full refund. If you have a challenging situation, Ensystem guarantees to assist you with the matter and, where required, send one of our trained technical support specialists to visit the site with you.

Ensystem always uses the highest quality materials to ensure optimal efficacy and safety. SDS to international standards are available for all Ensystem products and, where relevant.

## ENSYSTEX FORMULATIONS

Ensystem is a world leader in bait technologies and the development of aqueous (water-based) suspension concentrates. Ensystem guarantees all formulations are of a class-leading standard.

### Unique Micro-fine Suspensions

With suspension concentrates particle size is critically important. If the particles are too large the product will leave unsightly residues, if too small they will sink into porous surfaces. For this reason Ensystem uses a custom-built, highly refined vertical milling process to ensure a micro-fine particle size. These micro-fine particles are then more easily picked up by the insects, yet they will remain on porous surfaces to give you improved residual performance on even the most difficult surfaces such as concrete. Moreover, the microfine particles will enter the insect's spiracles more readily which leads to faster kill and a more effective product.

Ensystem then uses a sophisticated suspension system to suspend the particles in the water-based formulation and protect it from degradation and microbial / fungal attack. This ensures that the actives remain suspended in your spray tank, so whenever you spray you are placing the optimal amount of active onto your treated surface. (Of course you should always agitate your spray mix prior to commencing a treatment program.) All water-based products also employ Ensystem's unique Microbial Protection Blend™. All water-based products are subject to microbial infection once they have been opened, or after resting in your spray tank. This can lead to strong odours, mould growth and poor performance. To help combat this, all reputable manufacturers include a biocide in their formulation to protect against gram-positive bacteria. Since these biocides are expensive, the cut-price formulators leave them out, leaving you with potential problems. At Ensystem we offer an even higher level of protection since our Microbial Protection Blend™ uniquely provides protection against both gram-positive and gram-negative bacteria, thus ensuring the highest quality product at all times.

And all Ensystem products come with a written Quality Performance and Support Guarantee, your contractual agreement from Ensystem that we will be there to support you - ALWAYS!

## YOUR ON TIME DELIVERY GUARANTEE...

### ENSYSTEX MAKES THIS COMMITMENT TO YOU:

If you place your order before 2.00pm, your order will leave the same day. If you place your order after 2.00pm, your order will leave the next day. Ensystem delivers your products, door to door, using South Africa's leading courier services to optimise prompt receipt of goods.

# ATTRATHOR™

## TARGETED INSECTICIDE

Attractive Betrayal: A world first LIQUID BAIT with advanced micro-encapsulated attractant combined with micro-encapsulated fipronil, the active you know and trust.



### ATTRATHOR KEY FEATURES

- ✓ **Quick-release Insect Attractant Micro-capsules™;** Tiny, 2 µm, solid-core capsules which contain the cockroach food attractant in a matrix within a polymer shell. These tiny Micro-capsules have a large surface area relative to their volume, which allows for the quick-release of the attractant. The attractant diffuses out through the polymer shell, quickly luring the cockroaches to the ATTRATHOR Target Zone™.
- ✓ **Controlled-release Active Micro-capsules™;** Larger, 35 – 55 µm, liquid-core capsules contain the active fipronil. These capsules have a finer polymer shell and, trapped within the liquid fipronil core, are tiny bubbles of CO<sub>2</sub>. These pressurise the capsules, ensuring that when the insect makes contact with them, the capsules burst open, releasing the deadly fipronil within. These Micro-capsules control the release of the fipronil to ensure maximum residual performance. The larger size also ensures improved performance on porous surfaces.
- ✓ **Quick Elimination;** Within 48 hours, there will be a significant reduction in pest numbers.
- ✓ **Attractive Betrayal;** Insects are lured to the ATTRATHOR Target Zone™ by the Quick-release Insect Attractant Micro-capsules™ where they unknowingly pick up the deadly Controlled-release Active Micro-capsules.
- ✓ **Easy Application;** Through traditional spray equipment targeted into cockroach harbourages. ATTRATHOR can partner, or replace gel bait technology.
- ✓ **Kills More Cockroaches;** Cockroaches passing over the film pick-up the Active Micro-capsules, loaded with fipronil. When they later socialise, they unknowingly pass the toxicant on. This creates the Viral Transfer Effect™ leading to the kill of more cockroaches

### ATTRATHOR PRODUCT DETAILS

**Active Ingredient:** 26 g/L fipronil  
**Insecticide Group:** Phenylpyrazole  
**Formulation Type:** ATTRACT & KILL - Liquid bait  
**Pests Controlled:** Cockroaches and ants  
**Pack Size/ Code:** 250 mL (CHEAT1017)  
**Resistance Group:** 2B  
Reg. No. L10020 Act/Wat No. 36 of/van 1947

### PERFORMANCE

ATTRATHOR is unique since it provides both active and passive control of cockroaches.

**ACTIVE CONTROL** is achieved when the Quick-release Insect Attractant Micro-capsules™ lure the cockroaches to the ATTRATHOR Target Zone™ where they break the Controlled-release Active Micro-capsules™ containing the deadly fipronil. Due to fipronil's non-repellent chemistry, with its presence further concealed by the polymer coating of the Micro-capsules, the cockroaches remain totally unaware of the presence of the fipronil. Death occurs through either Contact Action - as the fipronil passes into the cockroach through the cuticle; Stomach Action - as the cockroach grooms itself and breaks or removes the Active Micro-capsules loaded with fipronil; or through the Viral Transfer Effect™ - where the cockroaches pass the Active Micro-capsules onto other cockroaches.

**PASSIVE CONTROL** is achieved through the effects of the liquid film forming a residual defence zone. ATTRATHOR is applied as a targeted surface spray into cockroach harbourages and areas where cockroaches frequent. Here it works like any other residual surface spray, except there is a very big benefit because ATTRATHOR is powered by fipronil's non-repellent insecticidal chemistry. The cockroaches cannot detect the presence of the fipronil, so they readily cross the treated target zone. Plus the micro-encapsulation protects the fipronil, slowly releasing it over time, providing up to three months of passive control.

# BITHOR<sup>®</sup>

## DUAL ACTION INSECTICIDE

The Silent Assassins! Two actives, two different modes of action combine into the unstoppable insecticide.



### BITHOR DUAL ACTION KEY FEATURES

- ✔ **Two Actives;** Each with a totally different mode of attack combine into one unstoppable insecticide that is stronger than its individual components.
- ✔ **Non Repellent;** Bifenthrin is combined with the non-repellent imidacloprid, to create a combination product that is effectively non-repellent.
- ✔ **Blended Active Concentrate (BAC) Technology;** The two actives are milled and blended together so they meld into one to disguise their presence.
- ✔ **Long term;** Residual action is provided through the intensified effects of two well known and trusted actives.
- ✔ **Power From Synergy;** By combining two actives from two totally different chemical groups we create a unique product that kills the toughest pests. The two actives combine together to create a synergistic effect with each actively intensifying the effects of the other, to create a more potent solution than either alone.
- ✔ **Two Different Modes of Action;** Imidacloprid is a neonicotinoid insecticide that acts as a synaptic toxin. It mimics the actions of the naturally occurring neurotransmitter, acetylcholine. In contrast, bifenthrin is a pyrethroid insecticide that acts as an axonic toxin affecting the sodium : potassium gate.

### BITHOR DUAL ACTION PRODUCT DETAILS

- Active Ingredients:** 45 g/L bifenthrin, 55 g/L imidacloprid
- Insecticide Group:** Bifenthrin (pyrethroid), imidacloprid (neonicotinoid)
- Formulation Type:** Odourless, waterbased micro-suspension concentrate
- Pests Controlled:** Bed bugs, spiders, ants, cockroaches, mosquitoes, fleas, flies, biting midges & paper nest wasps
- Pack Size/ Code:** 1 L (CHMBI1017), 3 L (CHMBI1018)
- Resistance Group:** 3A, 4A

Reg. No. L9717 Act/Wet No. 36 of/van 1947

### PERFORMANCE

BITHOR DUAL ACTION blends two actives, bifenthrin and imidacloprid, together to form a micro-suspension concentrate, where the particle size is optimised to penetrate the insect cuticle more readily, whilst providing improved residual performance on a wide range of surfaces and under a wide range of weather conditions.

# BLATTATHOR<sup>®</sup> ULTRA

## SUPERSONIC COCKROACH GEL BAIT

A gel bait formulated with FIPRONIL, the active you know and trust!



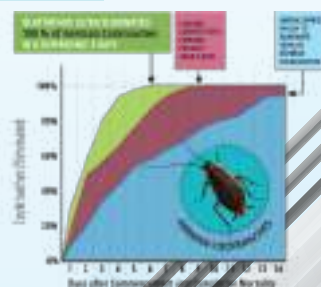
### BLATTATHOR ULTRA KEY FEATURES

- ✓ **Highly palatable mix of attractants, nutrients and feeding stimulants;** A clear winner with its ULTRA FAST kill and elimination of pest cockroaches, even nymphs - which means greater customer satisfaction and fewer call-backs!
- ✓ **Supersonic knockdown;** The Viral Feed Through Effect™ ensures supersonic knockdown of cockroaches, and with its high moisture retention, it keeps on killing.
- ✓ **Highly palatable;** It is unique blend of several highly palatable cockroach foods and proprietary feeding attractants combine to ensure that cockroaches readily feed, giving you great results.
- ✓ **Professional strength;** Fueled by fipronil at 0.5 g/kg BLATTATHOR ULTRA ensures cockroaches start to vanish quickly, meaning greater customer satisfaction and fewer call-backs.

### BLATTATHOR ULTRA PRODUCT DETAILS

- Active Ingredient:** Professional strength 0.5 g/kg fipronil  
**Insecticide Group:** Fipronil is a broad spectrum phenylpyrazole insecticide  
**Formulation Type:** Translucent cockroach gel  
**Pests Controlled:** Cockroaches  
**Pack Size/ Code:** 4 x 30 g tubes (CHEBG2017)  
**Resistance Group:** 2B

Reg. No. L9297 Act/Wet No. 36 of/van 1947



### PERFORMANCE

Place BLATTATHOR ULTRA bait as close as possible to cockroach harbourages. Place bait spots into cracks and crevices away from where they are likely to be removed by cleaning.

### DIRECTIONS FOR USE

For German and American cockroaches in commercial, industrial and residential buildings. Apply as a 2 mm to 4 mm diameter bait spot. Use the larger bait spot for American cockroaches.

Apply 12-24 bait spots for a 30 m<sup>2</sup> treatment area for heavy infestations and 4-6 bait spots for a 30 m<sup>2</sup> treatment area for light infestations.

# HYMENOPTHOR<sup>®</sup> ULTRA

## GRANULAR ANT & COCKROACH BAIT

Targeted to kill all species of ants and cockroaches, including nymphal stages.



### HYMENOPTHOR ULTRA KEY FEATURES

- ✔ **Eliminates;** All species of ants and cockroaches, including large and small cockroach species.
- ✔ **Liquid Oil Phase Release™;** Technology ensures uptake of the fipronil, and produces results equal to, or better than, those of gel baits for cockroaches - including nymphal stages.
- ✔ **Viral Feed Through Effect™;** Of fipronil further ensures its rapid spread throughout ant colonies. Since fipronil is a quick acting insecticide, it is important to use it at a low rate to ensure it is spread throughout the entire colony.
- ✔ **Advanced Bait Technology™;** Provides a unique composite of proteins, sugars and oils to target sugar feeding species, oil feeding species and protein feeding species.
- ✔ **Ultra Strong;** Performance is particularly spectacular when targeting cockroach nymphal stages, the most difficult life-stage to control.

### HYMENOPTHOR ULTRA PRODUCT DETAILS

<b>Active Ingredient:</b>	0.1 g/kg fipronil
<b>Insecticide Group:</b>	Phenylpyrazole
<b>Formulation Type:</b>	Granular bait - ready-to-use
<b>Pest Controlled:</b>	Ants and cockroaches, all species
<b>Pack Size/ Code:</b>	450 g (CHEY1003)
<b>Resistance Group:</b>	2B

Reg. No. L9298 Act/Wet 36 of/van 1947

### PERFORMANCE

As a granular bait, efficacy is enhanced by the ant's feeding behaviour. Worker ants are generally liquid feeders and cannot ingest solid baits. So they use their legs and mouthparts to physically carry the solid bait granules back to the nest for the larvae to digest and feed to the colony.

Therefore the bait is not diluted when it reaches the nest. In contrast, with liquid or gel baits, the ants ingest the bait and then pass it through to nest mates by trophallaxis, which means there is some dilution of the toxicant as it is passed from one ant to the next. More importantly though, with the Liquid Oil Phase Release™ technology, the workers are also able to feed directly on the HYMENOPTHOR ULTRA and receive a toxic dose of the active, as well as feeding on the pre digested liquid from the larvae.

Cockroaches have an exceptionally high preference for solid based foods, with bread ranking higher than most cockroach gels as a preferred food. HYMENOPTHOR ULTRA optimally satisfies cockroaches preference for a cereal based diet leading to aggressive feeding and a speed of kill better than that achieved with gel baits. The Liquid Oil Phase Release ensures the fipronil is readily digested by the cockroaches.

# MAGNATHOR™

## MAGNETIC INSECTICIDE WITH MAGTHANITE®

### MAGNETIC ATTRACTION - OUTSTANDING RESULTS

Eliminates termites, cockroaches and ants.



#### MAGNATHOR KEY FEATURES

- ✔ **A totally novel approach to cockroach control;** MAGNATHOR MAGNETIC is a dry, flowable bait/powder. For cockroaches and ants, it contains a desirable blend of food attractants that lure the foraging insects towards the MAGNATHOR Kill Zone™. As they approach the Kill Zone, the insects literally act like a magnet and draw the MAGNATHOR particles to their exoskeletons resulting in their death.
- ✔ **Eliminates Termite Colonies;** MAGNATHOR MAGNETIC is applied directly on to termites or into their active workings, bivouacs or colonies. Just about anywhere termites exist and you need to get rid of them quickly, indoors or outside. For termite nests in trees, stumps, posts, fences, landscaping timbers, wharves, bridges, mounds and wall cavities, simply drill several holes into the nest and apply using the **ACCUTHOR Precision Blower** available exclusively from Ensystex. Monitor at weekly intervals and... watch the termites disappear!
- ✔ **Highly Effective;** MAGNATHOR delivers results
- ✔ **Magnetic Attraction;** MAGNATHOR employs the power of paramagnetism. The magnetic properties of the constituent powders of MAGNATHOR cause the powder to adhere to the insects' exoskeletons when they approach it. The powder enters the insects' bodies through the soft membranes in the exoskeleton. When compared with conventional treatments, MAGNATHOR's magnetic properties deliver superior results in the two critical areas of adhesion and transferability resulting in accelerated kill, and colony elimination!
- ✔ **Accelerated multiple cascade effect™;** MAGTHANITE's magnetic powder technology, powers MAGNATHOR's Accelerated Multiple Cascade Effect™ which provides a three-level mortality chain.
- ✔ **Active and Passive Kill;** The MAGNATHOR powder enters the insects through either ingestion or contact action through the soft membranes of the exoskeleton. The magnetic properties of MAGNATHOR deliver superior results.
- ✔ **Ultra Killing Power;** MAGNATHOR is powered by fipronil.

#### MAGNATHOR PRODUCT DETAILS

**Active Ingredient:** 0.5 g/kg fipronil  
**Insecticide Group:** Phenylpyrazole  
**Formulation Type:** Dry, flowable powder  
**Pests Controlled:** Cockroaches, ants and termites  
**Pack Size/ Code:** 4 x 30 g tubes (CHEMG1006)  
**Resistance Group:** 2B

Reg. No L10417 Act/Wet 36 of/van 1947



#### PERFORMANCE

MAGNATHOR employs the power of paramagnetism. The very weak magnetic attraction shown by insect exoskeletons. Insect chitin shows a clear attraction to ferromagnetic particles.

The magnetic powder, MAGTHANITE, used in MAGNATHOR is a blend of Myranite and strontium ferrite. Research has supported the attraction between this ferromagnetic powder and insect cuticles. Tests by Smith and Moores at Rothamsted Experimental Station, UK showed that insects passing over a residual deposit of MAGTHANITE picked up an average of 56% more particulate material than those passing over a deposit of inert dust. In a further test they found that 250% more MAGTHANITE was transferred between insects.

These paramagnetic processes are exploited by MAGNATHOR to provide rapid control of insect populations.

MAGTHANITE is a registered trademark of Enph Energy Investment Group Holding Co. Ltd. and is protected by patents.



# MAXXTHOR<sup>®</sup>

## TERMITICIDE & INSECTICIDE

High performance termiticide and insecticide for indoors & outdoors.

Superior soil penetration, powerful performance, odourless, professional strength, water-based and long-term residual.

### MAXXTHOR KEY FEATURES

- ✔ **A unique professional strength, water-based formulation containing 100 g/L bifenthrin that is priced to perform;** This gives you premium quality at a price you can truly afford.
- ✔ **MAXXTHOR is labelled for the long-term control of a wide range of pests including urban insect pests, vectors, spiders, ticks, turf insects and termites;** So when you carry MAXXTHOR with you it is a total solution for all your pest control needs.
- ✔ **MAXXTHOR Mosquito Protection Zone;** A Special program providing your clients with up to eight weeks of freedom from mosquitoes and other biting insects.
- ✔ **Odourless;** No need to worry about smells. Since this is a water-based product it is gentle on the nose.
- ✔ **Water-based;** No staining, no corrosion of your equipment.
- ✔ **Tested in Australian soils and through reticulation systems;** Since MAXXTHOR was the primary registrant we had to prove its performance in a wide range of soils. So you can be sure it offers the best quality termite barrier possible.
- ✔ **Withstands degradation by sunlight, rain and heat;** So you have fewer call backs.
- ✔ **Non-sensitising;** This means you are less likely to experience the skin tingling associated with most pyrethroids.
- ✔ **Safe to plants and rapidly metabolised by plants and animals;** In fact MAXXTHOR is designed for direct application to foliage. And the active ingredient is in widespread use on a wide range of food crops.
- ✔ **Approved for use indoors and outdoors, in the most sensitive areas;** So you can take it anywhere with you.
- ✔ **No hydrocarbon solvents;** So you have no worries about staining, odours, or equipment corrosion.
- ✔ **Approved for both pre-construction and post-construction termite management;** A total termite solution.
- ✔ **Long term residual;** There is no product on the market with a longer label claim for termite management. MAXXTHOR claims protection for ten years or more.
- ✔ **Contains Ensystex's unique Microbial Protection Blend<sup>™</sup>;** To ensure the product remains fresh out in the field and in the back of your truck.

### MAXXTHOR PRODUCT DETAILS

<b>Active Ingredient:</b>	100 g/L bifenthrin
<b>Insecticide Group:</b>	Pyrethroid
<b>Formulation Type:</b>	Micro-fine suspension concentrate (water-based)
<b>Pest Controlled:</b>	Controls a wide range of pests as per the product label
<b>Pack Size/ Code:</b>	1 L (CHEMX1005), 5 L (CHEMX1006)
<b>Resistance Group:</b>	3A

Reg. No. L8793 Act. Wet No. 36 of/van 1947

### PERFORMANCE

MAXXTHOR also comes with the *Ensystex Ten Year Performance Guarantee.\**



# MAXXTHOR<sup>®</sup> TURBO

## TARGETED INSECTICIDE

Turbo charge your clients into the future, today.  
STOP Callbacks, increase client satisfaction  
through Superfast knockdown, Long term  
residual performance, Resistance Fighter.



### MAXXTHOR TURBO KEY FEATURES

- ✓ **Revolutionary;** New suspo-emulsion formulation combines three active ingredients together to work better than anything you have experienced before.
- ✓ **Turbo Kill;** The turbo charged oil phase enters rapidly through the insect's spiracles; allowing the oil phase insecticides to instantly halt the insect nervous system.
- ✓ **Long Term;** The micro-particles of bifenthrin are evenly spread by the TURBO organic phase ensuring long-term protection.
- ✓ **Resistance Fighter;** Piperonyl butoxide works to inhibit the enzymes that breakdown and detoxify pyrethroids, thus restoring their effectiveness against resistant or tolerant insects. Moreover it has also been proven to delay resistance development. Piperonyl butoxide is a specific inhibitor of microsomal oxidases, and has also been shown to inhibit resistance-associated esterases. Both these modes of action serve to enhance and potentiate the power of MAXXTHOR TURBO to ensure you get the best results.

### MAXXTHOR TURBO PRODUCT DETAILS

<b>Active Ingredients:</b>	100 g/L bifenthrin, 10 g/L imiprothrin, 120 g/L piperonyl butoxide
<b>Insecticide Group:</b>	Synergised pyrethroid
<b>Formulation Type:</b>	Suspo-emulsion
<b>Pests Controlled:</b>	Controls a wide range of pests as per the product label
<b>Pack Size/ Code:</b>	1 L (CHEMT1007)
<b>Resistance Group:</b>	3A

Reg. No. L10023 Act/Wet No. 36 of Jan 1947

### PERFORMANCE

A real problem with pyrethroid insecticides is the way they can scatter the insects, especially cockroaches. This in turn can lead to a spread of the problem. Now MAXXTHOR TURBO provides a total solution through the super fast action of imiprothrin, and its exceptional activity against cockroaches.

This speed of action arises as a consequence of imiprothrin acting much faster at the target site, the insect nervous system, than any other pyrethroid. When imiprothrin is applied directly to the cockroach nervous system, there is a rapid decline in spontaneous firing, followed by the rapid and complete disappearance of any charge.



# PROTHOR™

## 200 SC TERMITICIDE

The protector providing a professional standard for protecting buildings against termites.

### PROTHOR KEY FEATURES

- ✓ **Innovative Formulation;** Ensystex have taken the formulation of imidacloprid as a termiticide to the next level. With a micro-fine suspension concentrate ensuring particle sizes of less than 5 microns for better soil penetration and viral transfer. PROTHOR is also blended to protect it better from degradation in your vehicles.
- ✓ **PROTHOR is undetectable;** Some soil treatment termite control products do not kill termites, instead they repel them. These products are effective when applied in a perfect and continuous gap-free termite barrier, but if there are any gaps in the barrier through which termites can enter, its 'hello termites'.
- ✓ **Minimal impact on the environment and you;** Studies have shown that during applications of PROTHOR, airborne residues of PROTHOR in the structure are minimal. This means it is safe to remain at home while the PROTHOR Termite Defence Zone is being applied under and around your home. This is unlike some other termiticides which require you to vacate your home while they are being applied.
- ✓ **PROTHOR is easy on the nose;** In fact PROTHOR is almost odourless since it is a water-based product.
- ✓ **Non-sensitising;** This means no unpleasant sensations as often caused by other termiticides.
- ✓ **Safe to plants and rapidly metabolised;** Indeed the active in PROTHOR is widely used on agricultural food crops, in orchards, nurseries and in products applied directly to pets.
- ✓ **Approved for post-construction and pre-construction treatments;** For pre-construction PROTHOR should be applied through a reticulation system.
- ✓ **Employs Ensystex's unique Microbial Protection Blend™;** To ensure the product remains fresh out in the field and in the back of your truck.

### PROTHOR PRODUCT DETAILS

<b>Active Ingredient:</b>	200 g/L imidacloprid
<b>Insecticide Group:</b>	Neonicotinoid
<b>Formulation Type:</b>	Water-based, micro-fine suspension concentrate
<b>Pests Controlled:</b>	Termites
<b>Pack Size/ Code:</b>	1 L (CHEPR1003), 3 L (CHEPR1004)

Reg. No. L9794 Act/Wet No. 1947

### PERFORMANCE

When applied to soil at recommended rates, PROTHOR is undetectable by termites as they tunnel through it. Since termites can't detect PROTHOR treated soil, they can't avoid it and are killed by their contact with it. We call this the PROTHOR Termite Defence Zone™.

When termites unknowingly tunnel through PROTHOR treated soil, they accumulate PROTHOR on the outside of their bodies. PROTHOR does not immediately kill termites exposed to it. The delayed toxicity of PROTHOR allows contaminated termites to interact with non-exposed termite nestmates. This interaction can take place over three days. This ensures greater transfer and kills more termites than similar products. Non-affected termites that clean and groom other termites recently exposed to PROTHOR are themselves secondarily exposed and killed. This transmission of PROTHOR from termite to termite which cannot be detected or avoided by termites is referred to as the PROTHOR Viral Effect™.

The active ingredient in PROTHOR has some very special and unique soil binding properties. Chemists call these properties Hysteretic Binding. This unique chemistry means that PROTHOR is relatively slow to bind to soil particles, but once it does bind, it grips very tightly to ensure the Termite Defence Zone remains in place for a long time; to keep on killing termites. This hysteretic binding effect is important because it ensures that the PROTHOR Defence Shield™ created around your clients home is as complete and permanent as possible.

# ULTRATHOR™

## WATER-BASED TERMITICIDE & INSECTICIDE

Powered by fipronil, the active you know and trust. Guaranteed to provide protection against termite entry for up to 8 years or more\*.



### ULTRATHOR KEY FEATURES

- ✓ **Non-repellent to termites;** So they are totally unaware of its presence in the soil.
- ✓ **Absorbs tightly to soil, has low solubility in water, and a low vapour pressure;** As do its environmental degradates. Low application rates, combined with the unique ULTRATHOR formulation also reduces the risk of run-off.
- ✓ **Fast elimination;** Of termites attacking buildings together with highly effective, long-term residual control.
- ✓ **Viral Transfer Effect™;** This unique mode of action allows ULTRATHOR to rapidly spread throughout the termite colony, the same way a virus spreads through the internet, infecting all in its path.

### ULTRATHOR PRODUCT DETAILS

- Active Ingredient:** 100 g/L fipronil
- Insecticide Group:** Phenylpyrazole
- Formulation Type:** Micro-fine water-based suspension concentrate
- Pests Controlled:** Termites, ants, millipedes, house crickets, and earwigs.
- Pack Size/ Code:** 1 L (CHEUL1007), 3 L (CHEUL1016)
- Resistance Group:** 2B

Reg. No. L9296 Act/Wet No. 36 of Jan 1947

### PERFORMANCE

When termites approach the ULTRATHOR Termite Defence Zone™, they pick up the molecules of fipronil. Those termites that remain in the *Termite Defence Zone*, blissfully unaware of the presence of ULTRATHOR, will quickly die. Those termites that do not remain tunnelling into the ULTRATHOR Termite Defence Zone usually survive long enough to transfer the ULTRATHOR to other termites in the colony through grooming.

ULTRATHOR is toxic to termites by contact or ingestion. It causes death to termites by disrupting their nervous system. It binds to three types of chloride channels on the membranes of insect neurons, preventing calcium ion influx into the cell. One of these channels is controlled by the neurotransmitter gamma-aminobutyric acid (GABA) and the other two are controlled by glutamate. The presence of three different target sites accounts for ULTRATHOR's high potency against termites.



\*Visit [www.ULTRATHOR.com.au](http://www.ULTRATHOR.com.au) to learn more about our 8 year guarantee.

# EXTERRA<sup>®</sup>

## TERMITE COLONY ELIMINATION WITH REQUIEM<sup>®</sup> TERMITE BAIT

The World's Number One Termite Baiting System, Total Elimination of Termites – GUARANTEED.

### EXTERRA KEY FEATURES

- ✓ **Environmentally friendly;** EXTERRA is different. A truly safe, environmentally friendly way to eliminate termites, EXTERRA uses a termite's natural instincts against them, eliminating the attacking termites AND their whole colony.
- ✓ **Total Security;** Protects from the invasion of termites, continually. Even after the colony is eliminated, EXTERRA Stations guard using the natural power of CO<sub>2</sub>, monitoring for future invasions without the ongoing need to reapply chemicals. EXTERRA provides a long term termite solution that's easy on both you and the environment.
- ✓ **EXTERRA and Australian Wildlife Conservancy;** Partners for Life. When you install the environmentally friendly EXTERRA Termite Interception and Baiting System, you will be supporting Australian Wildlife Conservancy.
- ✓ **REQUIEM<sup>®</sup>;** is the most palatable termite bait in the world, it is truly irresistible to termites. Housed within the EXTERRA Station, it is this greatly superior palatability that makes EXTERRA the number one system in the world.
- ✓ **EXTERRA;** is safe for you, your family, pets and nature. EXTERRA focuses on total termite colony elimination without chemicals, guaranteeing the most effective results.
- ✓ **FOCUS Termite Attractant<sup>™</sup>;** EXTERRA is the only system that uses naturally generated CO<sub>2</sub> to attract the termites into the Stations to guarantee quicker interception and better results.
- ✓ **Larger Stations;** Preferred by termites to further improve performance.

### REQUIEM PRODUCT DETAILS

<b>Active Ingredient:</b>	1.0 g/kg chlorfluazuron
<b>Insecticide Group:</b>	Insect growth regulator
<b>Formulation Type:</b>	Cellulose based bait
<b>Pests Controlled:</b>	Subterranean termites
<b>Code</b>	FOCUS Termite Attractant (ENU110214), REQUIEM Termite Bait (F51/100127)

Reg. No. (Focus) L8795 Act/Wet 36 of/van 1947; (Requiem) L8796 Act/Wet 36 of/van 1947

### PERFORMANCE

In-ground Stations containing eucalypt timber interceptors are placed in-ground to intercept foraging termites and protect the property. Above-ground Stations are the preferred approach when termites are already active in the property. REQUIEM<sup>™</sup> Termite Bait is placed in the sealed station when it is installed. Above-ground Stations speed up the process of colony elimination. After the termite colony is eliminated, the Above-ground Stations are removed.

When the termites are intercepted, they are easily detected in the EXTERRA Stations. The unique (patented) design allows for termites to be seen without disturbing them. And the termites are not disturbed when the REQUIEM Termite Bait is added either. REQUIEM Termite Bait is highly palatable and consumed in preference to timber. In fact, termites can't resist REQUIEM, leading to the colony's quick demise.



## DISINFECTS AND PURIFIES THE AIR YOU BREATHE

The VECTOTHOR AIR160 employs the same three air disinfection technologies used to purify the air in hospital operating theatres; so it genuinely eliminates viruses, bacteria, moulds and other pollutants.



### ADVANTAGES OF THE VECTOTHOR AIR160

- ✔ **Disinfects and purifies;** The air up to 99.99%
- ✔ **Eliminates micro-organisms;** That are present in the air
- ✔ **Improves the quality;** Of the air/promotes a comfortable feeling
- ✔ **Purifies the air;** In enclosed areas
- ✔ **Has a positive;** Effect on your health
- ✔ **Strengthens the resistance;** Of the body against diseases
- ✔ **Inhalation allergies;** Are reduced or disappear
- ✔ **Anxiety and depression;** Can be reduced, or disappear
- ✔ **Diseases can;** Be prevented
- ✔ **Separate Stand;** Also available

### VECTOTHOR AIR TECHNICAL SPECIFICATION

<b>Energy consumption:</b>	65 Watt	<b>Ventilator:</b>	12 Volt
<b>Philips PL-L 60 W/4P H0 lamp:</b>	60 Watt	<b>Max. area capacity:</b>	100 m <sup>3</sup>
<b>UV-C Dose:</b>	4.23 mj/cm <sup>2</sup> (air flow 50 m <sup>3</sup> /hr)	<b>Max. throughput:</b>	150 m <sup>3</sup> of air per hour
<b>UV-C (YI) output:</b>	19.0 Watt	<b>Dimensions:</b>	600 x 170 x 150 mm
<b>UV-C (%) after 8,000 hours:</b>	85%	<b>Recommended run time:</b>	24 hours per day
<b>Filter:</b>	3M High Air Flow Electrostatic (HAFE)	<b>Maintenance:</b>	Replace UV-C Lamp & Filter annually

### PERFORMANCE

Many 'air-purifiers' make sweeping claims that are in fact cleverly worded to deceive. They claim to purify the air to 99.9%, but reading the fine print, they are just filter systems that take out the larger particles to this level.

VECTOTHOR AIR160 is different. It can actually deliver on its promise because it uses three different high-performance technologies: Filtration, UV-C Light Disinfection and Air Ionization, to eliminate contaminants and micro-organisms.

Three high-performance air-purification methods are uniquely combined into a single high-tech unit that is suitable for smaller areas up to 300 m<sup>3</sup>.

Purifying the air you breathe is no longer a superfluous luxury. An increasing number of micro-organisms and chemical pollutants are commonly found in the air we breathe in indoor environments; including viruses, bacteria and moulds. These all make our air less healthy to breathe.

VECTOTHOR AIR160 is a compact, stand-alone system, immediately ready-for-use with simple installation and maintenance. Easy to service, stylish and effective; it's the perfect air purifying system for so many applications.



# FUMITHOR™ HYGIENE

## DISINFECTANT SMOKE GENERATOR

FUMITHOR HYGIENE is a highly effective and unique method for improved sterilisation, used extensively throughout Europe. It's a low toxic, dry smoke disinfectant with potent bactericidal, virucidal and fungicidal properties, the perfect hygiene solution for modern industry and society.

### FUMITHOR HYGIENE KEY FEATURES

- ✓ Uniquely uses two different active ingredients for improved results.
- ✓ A broad-spectrum microbicide, effective against all vegetative bacteria, fungi, and viruses, it is also sporicidal.
- ✓ Optimal effective use of small quantities of disinfectant which minimises any impact on the environment while maximising results.
- ✓ Disinfectant is deposited everywhere (vertical, horizontal and underside of horizontal surfaces) which ensures a more thorough treatment.
- ✓ Easy to treat inaccessible areas - roofs, false roofs, nooks and crannies, etc.
- ✓ Lower operator and worker exposure to disinfectants makes it safer.
- ✓ It does not increase the humidity of the treated rooms meaning fungal growth is not encouraged.
- ✓ Effective treatment of any enclosed area.

### FUMITHOR HYGIENE PRODUCT DETAILS

**Active Ingredients:** 35 g/kg glutaraldehyde  
200 g/kg ortho-phenylphenol

**Formulation Type:** Smoke generator

**Pests Controlled:** **Viruses** including: avian reovirus, avian rotavirus, infectious bronchitis, *Pseudorabies* virus, infectious bursal disease, avian influenza, Newcastle disease, porcine reproductive respiratory syndrome, hog cholera = HC, avian laryngotracheitis, Marek's disease virus, human Corona virus.

**Bacteria** including: *Aeromonas punctata*, *Bacillus mycoides*, *Bacillus subtilis*, *Desulfovibrio desulfuricans*, *Enterobacter aerogenes*, *Escherichia coli*, *Leuconostoc mesenteroides*, *Proteus mirabilis*, *Pseudomonas fluorescens*, *Pseudomonas aeruginosa*, *Staphylococcus aureus*, *Listeria monocytogenes*, *Mycobacterium farae*, *Propionibacterium acnes*, *Salmonella choleraesuis*, *Bacillus cereus*, *Legionella pneumophila*, *Klebsiella aerogenes*, *Klebsiella pneumoniae*, *Desulphovibrio desulphuricans*.

**Yeasts & fungi** including: *Candida albicans*, *Candida krusei*, *Rhodotorula mucilaginosa*, *Rhodotorula rubra*, *Saccharomyces ballii*, *Saccharomyces cerevisiae*, *Torula utilis*, *Alternaria tenuis*, *Aspergillus flavus*, *Aspergillus niger*, *Aspergillus terreus*, *Aspergillus ustus*, *Chaetonium globosum*, *Mucor racemosus*, *Penicillium brevicale*, *Rhizopus stolonifer*, *Thiycophyton mentagrophytes*, *Thiycophyton rubrum*, *Stachybotrys atra*, *Penicillium funiculosum*, *Trichoderma viridae*.

**Pack Size/ Code:** 25 g (CHEFS1006), 50 g (CHEFS1013), 100 g (CHEFS1007), 400 g (CHEFS1008), 600 g (CHEFS1011), 1 kg (CHEFS1012)

Reg. No. Act 5GNR629/289759/140/1032

### PERFORMANCE

Glutaraldehyde is an organic compound that is highly effective as a disinfectant/sterilant and widely used in medical and surgical fields. Ortho-phenylphenol is an organic compound and a powerful biocide with strong bactericidal and fungicidal properties. It is commonly used as a general surface disinfectant in households, hospitals, nursing homes, farms, laundries, barber shops, and food processing plants. Together they provide a complete solution to your needs for a germ free environment.

FUMITHOR HYGIENE is ideal for enclosed areas in ANIMAL HEALTH poultry, egg production, animal breeding facilities, kennels; PUBLIC HEALTH health institutions and premises, medical centres, clinics, surgery areas, ambulances, saunas, gyms, pools, schools, hotels, cinemas, theatres, libraries, warehouses, offices, homes; FOOD INDUSTRY bakeries, mills, slaughter houses, food processing areas, food and vegetable storage; CROP PROTECTION post-harvest, silos, warehouses, ships, garages, cold stores, containers, etc...

# ECOTHOR

## ACTIVE NATURE

### - TURBO ACTIVE

This is a pure and natural solution for healthy drains, providing for the removal of accumulated biofilms and their associated smells and infestations.

When you create a healthy drain with TURBO ACTIVE, you will see many other problems disappear, including drain flies, bacteria, moulds and unhealthy smells.



#### ECOTHOR KEY FEATURES

- ✓ **NATURAL;** This is a pure and natural solution for healthy drains, providing for the removal of accumulated biofilms and their associated smells and infestations
- ✓ **TURBO ACTIVE;** contains our proprietary active, MATRICE U.B.
- ✓ **This is an active;** phyto-complex, polyvalent and potentiator, watery extract of the European olive tree (*Olea europaea*) together with a carefully selected blend of natural plant oils
- ✓ **TURBO ACTIVE;** has been submitted to rigorous scientific vitro tests, to confirm its effectiveness, ensuring the kinetic release of the active components for optimal bio availability and stability

#### ECOTHOR ACTIVE NATURE – ACTION PRODUCT DETAILS

- Active Ingredient:** *Olea europaea* (European olive tree) and selected blend of natural plant oils.
- Formulation Type:** Natural oil-gel
- Pack Size / Code:** 1 L (ENDC1000), 3 L (ENDC1001)

#### PERFORMANCE

ECOTHOR ACTIVE NATURE TURBO ACTIVE Natural Detergent for Drains cleans and sanitises due to the strong power it exerts on unhealthy biofilms. The eubiotic fragrance is an oil-gel natural product that releases a long-lasting perfume that also contributes to creating an unpleasant environment for biofilms and the associated pests that thrive in these biofilms, such as drain flies.





# AVITHOR™

## BIRD MANAGEMENT SYSTEMS

Bird control made simple, AVITHOR leaves buildings protected and the birds safe and unharmed.

### AVITHOR E4 DETERRENT SPIKES



**Protects against most bird species in medium or high pressure areas.**

Once fitted, AVITHOR DETERRENT SPIKES form a virtually invisible barrier to deter birds from landing or nesting on the fitted surfaces, while causing them no harm.

#### Description

Spikes in stainless-steel / Steelinox® / Steelinox®+ Highest-quality Stainless Steel, Spike Diameter 1.3 mm; with UV Stabilized Polycarbonate Base. 85 mm Low Height, 125 mm High Height, 130 mm Width, 500 mm Length. Carton contains 120 x 500 mm runs (total 60 m), weight approx 12 kg.

AVITHOR DETERRENT SPIKES are manufactured using non-corroding materials.



### AVITHOR DADDI LONG LEGS BIRD DETERRENT SYSTEM



**Protects against most large bird species in low or medium pressure areas.**

The AVITHOR DADDI LONG LEGS™ Bird Deterrent is designed to prevent birds from landing in hard to protect areas. Ideal for open spaces such as flat roofs or air conditioning units, as well as other situations such as domed or pointed roof peaks, and other areas where alternatives such as spiking or netting are too difficult or not possible.

The thin, stainless steel rods rotate in the breeze and wave menacingly, interfering with birds as they attempt to land. Designed to be as discrete as possible DADDI LONG LEGS is almost invisible from a distance of 20 m or more. Being inconspicuous the DADDI LONG LEGS can be installed in high traffic public areas with little risk of it causing offense by its appearance.

The DADDI LONG LEGS is for the safety conscious, the stainless steel rods are fitted with plastic tips to ensure no injury to birds, humans or other animals.

#### Available in three sizes

1.2 m / 1.8 m / 2.4 m





## AVITHOR E-TRACK



**Protects against all bird species in low, medium or high pressure areas.**

AVITHOR E-TRACK has changed the face of the bird control industry. One product is able to protect a wide variety of surfaces from all bird species, while at the same time being virtually invisible, and incredibly durable.

E-Track protects straight ledges, and curves to easily to protect sign letters. Jumpers snap quickly to the track, making it easy to power multiple tracks. A solar charger unit mounts to the building and sends intermittent power down the two conductors.

Quick connectors are used every 16 m, or wherever else connections are needed. Corner Quick Connectors make 90 degree angles a snap.

AVITHOR E-TRACK comes in a range of colours in 15 m rolls. A full range of accessories are also provided.



## AVITHOR EAGLE EYE



**Protects against most bird species in low to medium pressure areas in combination with other bird management systems.**

The AVITHOR EAGLE EYE bird scarer uses reflected light beams that flash at various angles from the rotating EAGLE EYE units to disorientate and irritate the birds.

The EAGLE EYE is fitted with a 12 V DC motor to make it turn at a specific speed, reflecting the light beams at constant intervals.

The EAGLE EYE functions optimally in direct sunlight. Artificial light can be used for indoor application or shady areas but is not as effective as direct sunlight and more units will be needed to cover the same area.

The reflective surface of the EAGLE EYE is manufactured from durable ABS plastics and will not break even during hailstorms. Animal welfare institutions are in favour of the EAGLE EYE because it is not harmful to any animals or the environment.

**The AVITHOR PRO-PELLOR Unit complements and enhances the effectiveness of EAGLE EYE.**

The PRO-PELLOR was designed to provide a durable, cost effective, reflective unit to complement the EAGLE EYE system. The PRO-PELLOR rotates by means of it's double bearing system and the wings have been designed to rotate with the slightest of breeze. The PRO-PELLOR is totally wind-driven and no power is needed.

The wings are made out of aluminium and the mounting bracket is 304-grade stainless steel.

This ensures longevity, even in coastal environments. The unit requires servicing every 4 months to ensure optimal reflections. The PRO PELLOR carries a 2 year guarantee.

**It is available in two colour variants: Silver and Gold for land birds, or Red and Gold for marine birds.**

The PRO-PELLORs are intended to be used in conjunction with the EAGLE EYE system. Each PRO-PELLOR has an effective radius of 15 m. Place one unit every 30 m in large open areas.

Always place the units in direct sunlight and in areas with a light breeze. Place the EAGLE EYE units on the highest points of the building and near the key problem areas. The PRO-PELLOR is intended to be used in conjunction with the EAGLE EYE system every 30 m between the EAGLE EYE units.

\* CONDITIONS APPLY.

# GORILLA RODENT TRAPS AND NARA LURES

## WORLD'S TOUGHEST AND MOST HUMANE TRAPS WITH ALLERGEN-FREE MONITOR FOR RATS AND MICE

Many food standards prohibit the use of anticoagulants for monitoring purposes. Most common baits are prone to mould formation in damp areas. NARA Lures solve these problems and Gorilla traps with CE certification provide a unique humane control solution.



Rat Trap

Mouse Trap

NARA Lure

### GORILLA RODENT TRAPS AND NARA LURES KEY FEATURES

- ✔ **Strongest mouse traps;** Bait socket made especially for NARA® Lures. High quality springs delivering most humane capture of mice.
- ✔ **Most humane rat trap;** Strongest springs available for humane kill of rats. Compliant with BANANA adapter for eMitter BEEP. Bait; socket made especially for NARA® Lures.
- ✔ **Emitter BEEP;** Pest control often requires traps to be placed in difficult to reach rodent harbourages that are costly to inspect and the client needs instant notification of a rodent capture. One easy answer is the eMitter BEEP. A super simple but highly reliable and effective audio warning sounds when a rodent trap has potentially caught a rodent.
- ✔ **Traps fit most stations;** Place traps stand alone or in a RODENTHOR Station.
- ✔ **NARA Lures;** are designed to fit into the Gorilla Traps. No other beats NARA Lure from 3 months up to 12 months long lasting efficacy in a variety of different aromas your professional aid for long-term performance. Professionals rely upon NARA Lure is the most hygienic and long-lasting way to bait traps. No cleaning up afterwards and no fast decrease of efficient monitoring with up to 12 months of non-stop activity.

### GORILLA RODENT TRAPS AND NARA PRODUCT DETAILS

Gorilla Trap - Rat	RDTF1011
Gorilla Trap - Mouse	RDTF1012
NARA Lure Fish	RDTF1002
NARA Lure Meat	RDTF1003
NARA Lure Vanilla	RDTF1004
NARA Lure Chocolate	RDTF1005
eMitter BEEP	RDTF1013



eMitter BEEP on GORILLA TRAP

### PERFORMANCE

The safest most effective options for the food industry.

# NARA BLOCKS

## THE FIRST ALLERGEN FREE, NON-TOXIC RODENT MONITOR

Allergen-management has become a major topic in many food product companies. NARA is especially designed for this specific purpose. Regulations as well as many food standards now prohibit the use of anticoagulants for monitoring purposes.

Only after the determination of rodent activity anticoagulants may be used subject to stringent restrictions. Food-based monitoring blocks have a critical disadvantage as they serve as food for rodents, helping them to survive and increase the risk of rising reproduction. Moreover, most are prone to mould formation in damp areas. In other areas they are often infested by non-target organisms, e.g. flour beetles, cockroaches, ants and snails.



### NARA BLOCKS KEY FEATURES

- ✓ **Identify the species;** With NARA Bloc you can tell by the visible bite marks in the material what species are present.
- ✓ **Lasts 3 to 12 months in any environment;** Indoors and outdoors and therefore beats the features of any organic monitor.
- ✓ **The go-to solution for food or pharma sites;** But also for any outdoor environment, in which rodenticide monitoring is a concern due to secondary poisoning, restrictions by regulations or standards.
- ✓ **The worlds biggest wildlife sanctuaries;** Rely upon NARA for professional monitoring in the toughest rain forest conditions.

### NARA BLOCKS PRODUCT DETAILS

NARA Bloc Fish	RDTF1006
NARA Bloc Meat	RDTF1007
NARA Bloc Vanilla	RDTF1008
NARA Bloc Chocolate	RDTF1009

### PERFORMANCE

The safest most effective options for the food industry.



# NARA SPRAY

## ATTRACTIVE SPRAY-MONITORING FOR RATS AND MICE

Spray NARA Spray onto your stations and lay a trail towards them in order to improve your results.

### NARA SPRAY KEY FEATURES

- ✔ **Supports non-toxic monitoring;** By allowing you to leave a trail to lure rodents to traps and mask the smell of plastic stations.
- ✔ **Beneficial monitor;** Can be used to spray any station to mask smells of plastic or human odours and make the stations more attractive.
- ✔ **Highly attractive;** For all commensal rodents.
- ✔ **With handy holster and belt;** So you can always have it with you when doing rodent work.

### NARA SPRAY PRODUCT DETAILS

NARA Spray Meat flavour aerosol	500 g (RDTF1001)
NARA Spray Chocolate flavour aerosol	500 g (RDTF1002)

### PERFORMANCE

Rodent stations and traps are made of plastic. Plastic has its own chemical smell. If you hold a lighter to anything plastic it smells extremely toxic. This can be compared to what rodents smell when entering a rodent station. Rodents sense of smell is many times better than humans.

NARA Spray seals away the plastic smell, making stations attractive to rodents. The scent lasts around 2-3 months and needs to be renewed, but after repeated application it will slowly soak into stations. Renewing the scent every few months adds fresh attraction to stations luring in new generations of pests.

NARA Spray can also be used to spray a bait-line towards stations, to lure rodents from the bushes or holes into the station. The theory comes from hunting, where hunters drag a dead rabbit to a trap to catch foxes. Scientific trials showed that rodents are curious and follow the smell over large distances, even up to 40 m, with their sensitive noses - like an irresistible cookie trail.

The spray is not only an aroma scent, but it also feeds them with a nutritious vegetable oil, so they feel the desire for more. It consists of 100% vegetable rapeseed oil which is super nutritious for rats and mice and has its own natural scent that is refined with an added meat/beef aroma mixture.

#### Secure Gel Pads

Secure Stations quickly, but also remove them without damage if necessary. Clients and auditors see them as a hygienic to alternative.

- Reusable up to 50 times - Leave no residue or stains - Best for insect monitors or bait boxes
- IFS and AIB approved - For permanent or temporary control points - Sticks to most surfaces
- Holds up to 1.5 kg.



# MUSKIL<sup>®</sup> DUAL ACTIVE RODENTICIDE BLOCKS

**FLUO-NP<sup>™</sup>**

UV TRACKING TECHNOLOGY

## A GENERATIONAL BREAKTHROUGH IN RODENTICIDE TECHNOLOGY KILLS RATS AND MICE FASTER THAN OTHER RODENTICIDES



First rodenticide to include fluorescent tracking with palatability optimised to the the rodent's senses of sight, smell and taste.

### MUSKIL BLOCK KEY FEATURES

- ✓ **Two actives;** MUSKIL blends two different Second Generation Anticoagulant Rodenticides (SGARs), difenacoum and bromadiolone, together to create a rodenticide that outperforms any other product in the market in terms of speed of kill and reduced risk to pets.
- ✓ **MUSKIL has also been uniquely formulated;** To provide improved palatability. And MUSKIL's FLUO-NP Technology helps overcome Bait Shyness and allows you to track rodents and bait consumption for improved monitoring and higher standards of safety in HACCP managed food establishments.
- ✓ **Power from synergy;** By combining two actives we create a unique product that kills the toughest rodents, including those resistant to other anti-coagulant rodenticides.

The two actives combine together to create a synergistic effect with each dynamically intensifying the effects of the other, to create a more potent solution than either alone, yet at the same time achieving reduced risk to people and pets.

- ✓ **Cost Effective;** MUSKIL kills rodents faster, so often less bait is consumed, which helps reduce the costs of your management programs. Plus the neophobic response to MUSKIL is much lower than with traditional baits using standard dyes, therefore bait is accepted more quickly, more palatable and more efficient in use.
- ✓ **FLUO-NP Technology;** is an abbreviation of Fluorescent No Phobia. The No Phobia aspect is in reference to how MUSKIL overcomes the rodent's natural neophobia, which relates to the commonly observed behaviour of bait shyness, where rodents are reticent to feed on a bait. Numerous field trials and commercial results have proven that MUSKIL can defeat bait shyness.

### MUSKIL BLOCK PRODUCT DETAILS

<b>Active Ingredients:</b>	0.025 g/kg bromadiolone, 0.025 g/kg difenacoum
<b>Pesticide Group:</b>	Hydroxycoumarins
<b>Formulation Type:</b>	All weather block
<b>Pests Controlled:</b>	Rats and mice
<b>Pack Size/ Code:</b>	10 kg (RDTM1000), 3 kg (RDTM1001)

Reg. No. L10359 Act/Vet 36 of/van 1947

### PERFORMANCE

The FLUO-NP contributes to the primary bait acceptance of MUSKIL, thereafter, the formulated ingredients enhance the palatability. MUSKIL has been prepared specifically for Australian and Asian markets and provides improved palatability for our local rats and mice, especially the black rat (*Rattus rattus*). MUSKIL employs high quality aromatic ingredients to entice rodents to the bait coupled with high grade proteins to ensure optimal feeding.

All rodenticides have added colour dyes to deter feeding by birds and other animals with full colour vision. However, all the usual dyes used in rodent baits can be detected by rodents and do slightly deter feeding. University trials have shown that the FLUO-NP dyes used in MUSKIL are non-detectable to rodents providing for further improvements in palatability.

# RODENTHOR<sup>®</sup> BLOCK RODENTICIDE

## A TRUE SINGLE FEED RODENTICIDE

For use in all situations, against all species of rats & mice.



### RODENTHOR BLOCK RODENTICIDE KEY FEATURES

- ✓ **Ready to use block bait;** Suitable for use in damp or dry situations in and around industrial, commercial, public services, agricultural and domestic buildings.
- ✓ **Works in the toughest situations;** Controls rodents resistant to other anticoagulants, including warfarin, coumatetralyl and bromadiolone.
- ✓ **Clever design;** The block has been designed with a central hole for easy mounting in various situations and several sharp corners to increase its attractiveness to rodents by providing numerous gnawing edges.
- ✓ **Economical block size;** The 15 g block allows more placements, reduces wastage and provides for more effective control of rats and mice.
- ✓ **Irresistible to mice and rats;** This highly palatable extruded block uses the highest quality ingredients to ensure it is irresistible to rats and mice.

### RODENTHOR BLOCK RODENTICIDE PRODUCT DETAILS

<b>Active Ingredient:</b>	0.05 g/kg brodifacoum
<b>Pesticide Group:</b>	Hydroxycoumarin
<b>Formulation Type:</b>	All weather block
<b>Pests Controlled:</b>	Rats and mice
<b>Pack Size/ Code:</b>	5 kg (RDTB1038), 10 kg (RDTB1039)

Reg. No. L9396 Act/Wet 36 of/van 1947

### PERFORMANCE

RODENTHOR BLOCK RODENTICIDE is a tough, efficient eliminator of rats and mice. The extruded block has effective weather resistance to make it survive in most environments. One feed is all that is required to kill a rodent. The 15 g block uses the most potent rodenticide on the market, brodifacoum, and is optimised to tackle rodents without using excessive bait, so your purchase goes further.

Nails or wire may be used to fix blocks to prevent them being removed by rodents.

Alternatively use RODENTHOR Block Rodenticide in the Ensystex RODENTHOR Bait Stations such as the PETI, ALPHA, BETA or PILOT Stations to enhance effectiveness.



# RODENTHOR<sup>®</sup> SOFT BAIT

## FATAL ATTRACTION

Irresistible to rodents, and a single feed is lethal to every rodent, every time.



### RODENTHOR SOFT BAIT KEY FEATURES

- ✓ **Made from the finest ingredients;** RODENTHOR's soft pasta base is by far the most palatable bait presentation for rodents.
- ✓ **Each 15 g sachet is enough to kill a rat;** Whilst ensuring your purchase goes further.
- ✓ **Attractive;** The edible sachets allow the release of the carefully selected aromas which draw rodents to the bait. They then readily feed on the high protein, moist pasta-based bait which provides both a high quality food source, and moisture.

### RODENTHOR SOFT BAIT PRODUCT DETAILS

- Active Ingredient:** 0.05 g/kg brodifacoum
- Pesticide Group:** Hydroxycoumarin
- Formulation Type:** Soft paste bait in an edible sachet
- Pests Controlled:** Rats and mice
- Pack Size/ Code:** 3 kg (RDT1004)

Reg. No. L9586 Act/Wet 36 of/van 1947

### PERFORMANCE

RODENTHOR Soft Bait is a tough, efficient eliminator of rats and mice. One feed is all that is required to kill a rodent. The 15 g bait uses the most potent rodenticide on the market, brodifacoum, and is optimised to tackle rodents without using excessive bait, so your purchase goes further. Due to it being the most palatable bait formulation on the market, this should always be considered as your first choice for rodent baiting programs, especially at difficult sites.



# RODENTHOR<sup>®</sup> MONITOR BLOCKS

**FLUO-NP<sup>™</sup>**

UV TRACKING TECHNOLOGY

## A PROFESSIONAL APPROACH TO RODENT MANAGEMENT

### RODENTHOR MONITOR BLOCKS OVERVIEW

RODENTHOR Monitor Blocks with FLUO-NP Technology are 15 g non-toxic, extruded block baits containing our unique FLUO-NP Technology, a food-grade additive that makes rodent droppings glow bright yellow when a UV tracking light is shone on them. RODENTHOR Monitor Blocks are used for monitoring rodent activity in sensitive areas or for use as part of a routine rodent management program.

They are formulated like our MUSKIL<sup>®</sup> Dual Active Rodenticide, which offers numerous benefits to your rodent management programs. In addition to allowing you to better monitor rodent activity, this means you can ensure the rodents will readily change to feeding on MUSKIL once you have detected activity.

### RODENTHOR MONITOR BLOCKS KEY FEATURES

- ✓ **Essential;** In the increasingly professional world of rodent management, this is an essential tool for professional pest managers. Particularly since there is ever increasing pressure to minimise the use of second generation anti-coagulant rodenticides (SGARs) in the environment.
- ✓ **Highly attractive;** Made of the same highly attractive food sources used for MUSKIL DUAL ACTIVE RODENT BLOCKS, RODENTHOR Monitor Blocks allow feeding to commence before the toxic bait blocks are provided.
- ✓ **RODENTHOR Monitor Blocks with FLUO-NP Technology** provide for traceability of ingested bait allowing for tracking of rodent movements and runs. This is because the non toxic FLUO-NP dye is excreted into the rodent's droppings. So when you shine a UV Tracking Light onto the droppings, they will glow yellow.
- ✓ **Sensitive;** They are ideal for monitoring rodent activity in sensitive areas, in food industries, schools, hospitals and in any place where, according to HACCP and IPM (Integrated Pest Management), the use of poisonous baits must be reduced or avoided. It is still always advisable to protect bait points from non-target animals and from water using Ensystex's RODENTHOR Bait Stations. This will also ensure improved feeding since the stations provide a safe haven for the rodents.
- ✓ **Pre-feed program;** Once you detect rodent feeding on the Monitor Blocks, you simply place your MUSKIL Blocks in the same Stations to ensure elimination. Since MUSKIL Blocks use a dye that glows red under a UV light, you can also easily distinguish between rodents feeding on the MUSKIL and those feeding on the Monitor Blocks.
- ✓ **Safe for damp areas;** RODENTHOR Monitor Blocks with FLUO-NP Technology retain their attractiveness to rats and mice in damp locations and are enriched with highly palatable ingredients for rodents. Thanks to their hole in the middle, they can be fixed in manholes above the water level, while their irregular and sharp-cornered form increases palatability. They can also be easily secured on the rods of bait stations.

### RODENTHOR MONITOR BLOCKS PRODUCT DETAILS

<b>Active Ingredient:</b>	None
<b>Formulation Type:</b>	Ready to use food source
<b>Pests Controlled:</b>	Rats and mice
<b>Pack Size/ Code:</b>	5 kg pail (RDTB2002)



# RODENTHOR<sup>®</sup>

## RAT AND MOUSE STATIONS



### BETA RODENT STATION

#### Compact Station for Rats and Mice

Our most popular model with child-resistant features, double lock system, steel rod and a removable tray for easy cleaning. This station also comes with a wall mounting bracket kit.

Dimensions: 230 x 190 x 95 mm



Code: RDTS1001



### CORAL STATION

#### Ultra Compact Station for Rats and Mice

Very cost effective, durable, versatile and ultra compact to fit just about anywhere. The side opening lid offers greater installation flexibility and single locking mechanism provides ease of operation. Comes with steel rod, wall mounting bracket kit and removable tray for easy cleaning.

Dimensions: 230 x 125 x 75 mm



Code: RDTS1067 - Pack of 30 Units

Code: RDTS1070 - Pack of 10 Units



## NEPTUNO RODENT STATION

### Versatile Mid-size Station for Rats and Mice

A truly multi-purpose station for use in many different configurations. Available with feeding trays, vertical and horizontal feeding rods for bait, water container, large snap trap and more.

Dimensions: 235 x 185 x 90 mm



Code: RDTS1018



## PETI MOUSE STATION

### Compact Station for Mice

Highly durable mouse station capable of housing 2 blocks or soft bait sachets with single key lock for safety.

Dimensions: 125 x 100 x 40 mm



## ALPHA RODENT STATION

### Tunnel Bait Station

Sturdy, long lasting station is suitable for both rats and mice and is a cost-effective professional and long-lasting alternative to cardboard rodent boxes. Ideal for placement in roof voids, behind large appliances, etc. Comes fitted with bait rod holder and single key locking system. Rats in particular like to 'run-through' stations of this nature since they can clearly see the exit.

Dimensions: 240 x 105 x 95 mm



Code: RDTS1000



## PILOT RODENT STATION

### Our Largest Rodent Station

This large size station comes with all the trimmings you expect of a premium station. Features include an optional secure wall mounting bracket, horizontal bait rods, vertical posts to hold even more bait, a removable tray for easy cleaning or to hold liquid bait and a spring-loaded dual lock system. Designed to be positioned along walls or fit snugly into corners. It comes with 2 lid options, black or translucent (see-through).

Dimensions: 350 x 275 x 95 mm



**SPECIAL ORDER -  
LEAD TIME 6 TO 12 WEEKS**



## ERIS MOUSE STATION

### SECURE Mouse Station

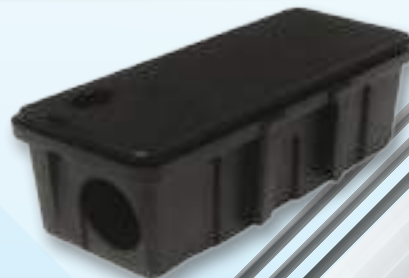
This is a small, discreet, water-proof, Station with same secure locking system as our other Stations that comes together with our patented security wall mount adaptor.

Rodenticide blocks can be secured vertically with the lid opening laterally for easier servicing.

Dimensions: 173 x 69 x 52 mm

Code: RDTS1071 - Pack of 13 Units

Code: RDTS1072 - Pack of 91 Units



## ROCK STATION

### Rock Station

Placed around the perimeter of your landscaped gardens, you might never notice this wasn't a natural rock. Designed for baiting both rats and mice, it blends in with the outdoor environment.

Code: RDTS1037



# ENVIRONMENTAL ROOM MONITORING SYSTEM (ERMS)

## EARLY DETECTION OF BED BUGS

Keeps guests safe from bed bugs – Environmentally Sensitive – Cost Effective – Simple

### ERMS KEY FEATURES

- ✔ **Early Detection Guaranteed;** Smaller infestations are easier to eradicate, meaning room closure times are reduced to hours instead of weeks - enhancing operational efficiency while protecting a hotel's reputation.
- ✔ **Better Protection;** ERMS ensures fewer guest complaints as infestations are usually detected before they develop. Importantly, ERMS reduces the risk that anyone could take a bed bug issue home with them.
- ✔ **Science in Action;** The system has been developed from a field based scientific approach to bed bug issues and acts as an Integrated Pest Management System in its own right, passing numerous Environmental Health inspections as a valid due diligence defence. In fact, it is also used by professionals to measure the effectiveness of bed bug management programs.

- ✔ **CIMETHOR Bed Bug Blue;** can be used with ERMS to confirm the identification of bed bug faecal spots. This simple analytical test kit can be used on the spot to confirm the identification of bed bugs spots ensuring there is no misdiagnosis.



### ERMS PRODUCT DETAILS

<b>Active Ingredient:</b>	Passive harbourage using no chemicals
<b>Pesticide Managed:</b>	Common bed bug <i>Cimex lectularius</i> Linnaeus and the tropical bed bug <i>Cimex hemipterus</i> Fabricius
<b>Size/ Code:</b>	The monitor is approximately 120 x 90 mm and less than 10 mm deep. It has a self-adhesive backing and is simply placed at the head end of the base of each bed. Placed discreetly, the exact positioning depends on the design of the bed and is advised upon by site inspection. Pack x 12 ERMS 1002 (Cimethor), ERMS 1001 ERMS Monitoring System

### PERFORMANCE

The ENSYSTEK ENVIRONMENTAL ROOM MONITORING SYSTEM (ERMS) has been uniquely developed as a 100% green solution to help combat the threat of bed bugs. It is discreetly placed to be checked by hotel staff on a weekly basis to provide a more complete/regular monitoring system that helps you catch bed bugs before they become a serious problem.

At the heart of the system is a very simple yet effective device – the Passive Bed Bug Monitor. To a bed bug, the monitor provides the ideal living accommodation for it to hide in and digest its meal. The monitor is designed in such a way that bed bugs are encouraged to defecate before they enter the monitor, thus providing evidence of an infestation, enabling early detection. Once a week housekeeping checks the monitor for signs of bed bug activity, it takes only a few seconds of their time.

# VECTOTHOR™ LIGHT TRAPS

## FLY CONTROL RANGE

VECTOTHOR delivers European design excellence in combination with university proven performance benefits to create the most effective flying insect management system on the market.



Leading edge solutions that guarantee the highest catch rates make VECTOTHOR Flying Insect Killer Light Traps the premium choice for HACCP food management programs, the hospitality industry, hospitals, indeed for anyone who wants peak performance in their flying insect management program.

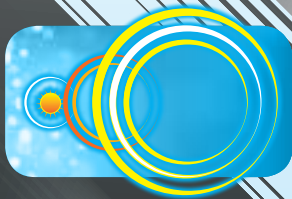
### ASTRON UV-A LAMPS - EUROPEAN MADE PRECISION



With the UV-A light output optimised to perfectly match the house fly's vision spectrum, ASTRON lamps guarantee you catch more flies more quickly.

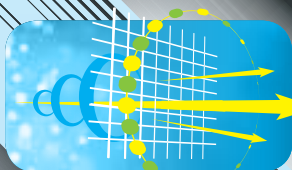
- \* CE-Approved.
- \* acc. IEC 60.335-259 International Standard for Insect Exterminators through TUV-Rheinland.
- \* Compliant with RoHS Standards (Removal of Hazardous Substances).
- \* Approved for use in HACCP (Hazard Analysis at Critical Control Points) Approved Food facilities.
- \* Shatter-proof coating from DuPont.

### NATURAL UV-A SUNLIGHT TECHNOLOGY™



VECTOTHOR uses an electronic ballast at 10,000 cycles per second so the lamp is indistinguishable from natural sunlight, thus providing greater attraction. Other lamps feature a mechanical starter and ballast that operates at 50 cycles per second. This means flies see the UV-A light as a rapidly flickering light which is unlike natural sunlight.

### NATURAL CONTRAST GRID™

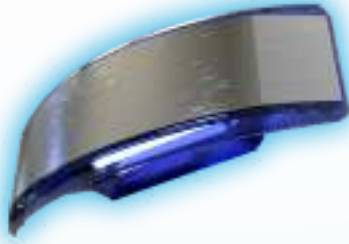


This provides 30% improved performance over conventional units since it reflects light onto the landing spot thereby stimulating the natural landing behaviour of flying insects.

## KITE

Recommended for use in homes, offices, shops and restaurants.

30% improved performance over conventional units due to its unique design, which reflects the light onto the landing spot thereby stimulating the landing behavior of flying insects. Product code: (VECL2018)



Area coverage:	35+ m <sup>2</sup>
Light source:	1 x 18 W RoHS PL ASTRON UV-A lamp
Catch type:	Temperature optimised glue board
Lamp life time:	9,000 hrs
Protection rating:	IP 20 (dust proof)
Dimensions (LxWxD):	420 x 136 x 136 mm
Mounting position:	Wall mounted
Product Code:	VECL2018

## FALCON

Recommended for use in homes, offices, shops and restaurants.

The FALCON is constructed in such a way that the UV-A light is directed upwards. The FALCON has an all metal housing and uses a powerful UV-A lamp to lure insects into its trap. Product code: (VECL1015)



Area coverage:	35 m <sup>2</sup>
Light source:	1 x 18 W ASTRON PL UV-A lamp
Catch type:	Temperature Optimised glue board
Lamp life time:	9,000 hrs
Protection rating:	IP 20 (dust proof)
Dimensions (LxWxD):	440 x 190 x 200 mm
Mounting position:	Wall mounted
Product Code:	VECL1015

## OSPREY

Recommended for use in shops and restaurants and dry industrial environments.

The unit can be wall mounted; The separate mounting strip offers easy maintenance & service. The OSPREY has a housing made of durable ABS plastic and white powder coated steel. Product code: (VECL1016)



Area coverage:	50 - 80 m <sup>2</sup>
Light source:	2 x 15 W shatterproof ASTRON UV-A lamps
Catch type:	By means of Temperature Optimised glue board
Lamp life time:	17,500 hrs
Protection rating:	IP 20 (dust proof)
Dimensions (LxWxD):	470 x 325 x 100 mm
Mounting position:	Wall mounted
Product Code:	VECL1016

## HARRIER / SEA HARRIER

Recommended for use in professional or industrial environments.

The HARRIER can be flag mounted on the wall or ceiling mounted. Mounting is a breeze with the snap-on mounting bracket. The HARRIER has an aluminium housing, which makes the unit both light and strong. Product code: (VECL1018)



Area coverage:	100 - 150 m <sup>2</sup>
Light source:	4 x 15 W shatterproof ASTRON UV-A lamps
Catch type:	Temperature Optimised centrally located glue board
Lamp life time:	17,500 hrs
Protection rating:	HARRIER IP 21 (drip proof) / SEA HARRIER IP 65 (hose proof)
Dimensions (LxWxD):	500 x 340 x 160 mm
Mounting position:	Wall, flag or ceiling mounted
Product Code:	VECL1018

## SEA EAGLE 150 EX

Recommended for use in areas with a potential danger of a gas or dust explosion.

The SEA EAGLE 150 EX is hose-proof and explosion proof IP rating of 68 and specially designed stainless steel front grid which optimises the attraction potential. The unit can be wall mounted in situations where there is risk of explosion. Product code: (VECL1013)



**SPECIAL ORDER -  
LEAD TIME 6 TO 12 WEEKS**

Area coverage:	100 - 150 m <sup>2</sup>
Light source:	2 x 18 Watt shatterproof Philips Longlife UV-A lamps
Catch type:	Temperature Optimised glue board
Lamp life time:	17,500 hrs
Protection rating:	IP 68 (hose proof/explosion proof)
Dimensions (LxWxD):	940 x 600 x 140 mm
Mounting position:	Wall mounted
Product Code:	VECL1013

## SPARROWHAWK

The innovative design of the VECTOTHOR SPARROWHAWK allows it to be mounted square on the wall or on a table-top or a bench. Product code: (VECL1025)



Optional Fruit Fly Lure available.

Area coverage:	15+ m <sup>2</sup>
Light source:	1 x 8 W UV-A lamp
Catch type:	Temperature Optimised glue board
Lamp life time:	9,000 hrs
Protection rating:	IP 20 (dust-proof)
Dimensions (LxWxD):	∅140 x 280 mm
Mounting position:	Wall or table-top mounted

## CONDOR 40 HT

Recommended for use in offices, non-food shops and non-food warehouses.

The unit is constructed in such a way that the UV-A light emission is 360 degrees around the unit. The CONDOR 40 HT has an all metal housing and uses a powerful UV-A lamp to lure insects into its trap. Product code: (VECL1006)



Area coverage:	40 m <sup>2</sup>
Light source:	1 x 22 W Phillips UV-A lamp
Catch type:	Short circuit proof high tension grid
Lamp life time:	9,000 hrs
Protection rating:	IP 21 (drip proof)
Dimensions (LxWxD):	370 x 370 x 140 mm
Mounting position:	Wall mounted, ceiling mounted or free standing

## BUZZARD

Recommended for use in shops and restaurants and dry industrial environments.

Wall mounting insect control unit suitable for trapping flying insects by means of 2 powerful UV-A lamps. Product code: (VECL2019)



Area coverage:	90+ m <sup>2</sup>
Light source:	2 x 15 W ASTRON UV-A lamps
Catch type:	Temperature Optimised glue board
Lamp life time:	9,000 hrs
Protection rating:	IP 20 (dust proof)
Dimensions (LxWxD):	538 x 103 x 311 mm
Mounting position:	Wall mounted

## MERLIN 45E

Recommended for use in homes, offices, shops and restaurants.

The unit can be mounted in multiple positions onto the wall or the ceiling or it can even be used free standing. The MERLIN 45E has a stainless steel front grid, with the housing made of durable ABS plastic and white powder coated steel. Product code: (VECL1003)



Area coverage:	45 m <sup>2</sup>
Light source:	1 x 15 W shatterproof ASTRON UV-A lamp
Catch type:	Temperature Optimised glue board
Lamp life time:	17,500 hrs
Protection rating:	IP 21 (drip proof)
Dimensions (LxWxD):	550 x 120 x 120 mm
Mounting position:	Wall, ceiling or cabinet mounted, or free standing
Product Code:	VECL1003

## MERLIN 100E

Recommended for use in shops and restaurants and dry industrial environments.

The unit can be mounted in multiple positions onto the wall or the ceiling. The MERLIN 100E has a stainless steel front grid, with the housing made of durable ABS plastic and white powder coated steel. Product code: (VECL1000)



Area coverage:	100 m <sup>2</sup>
Light source:	2 x 15 W shatterproof ASTRON UV-A lamps
Catch type:	Temperature Optimised glue board
Lamp life time:	17,500 hrs
Protection rating:	IP 21 (drip proof)
Dimensions (LxWxD):	570 x 220 x 160 mm
Mounting position:	Wall and ceiling mounted
Product Code:	VECL1000

## KINGFISHER

Recommended for use in shops and restaurants and wet industrial environments.

The hose proof IP 65 rated KINGFISHER can be mounted in multiple positions on the wall or the ceiling. Constructed with a stainless steel front grid, with the housing made of durable ABS plastic and white powder coated steel. Product code: (VECL1002)



Area coverage:	100 m <sup>2</sup>
Light source:	2 x 15 W shatterproof ASTRON UV-A lamps
Catch type:	Temperature Optimised glue board
Lamp life time:	17,500 hrs
Protection rating:	IP 65 (hose proof)
Dimensions (LxWxD):	570 x 220 x 160 mm
Mounting position:	Wall mounted or ceiling mounted
Product Code:	VECL1002

## PEREGRINE 3

Recommended for the toughest conditions and most severe fly problems in kitchens, food production areas, and more.

With its totally unique, world first design and fly trapping features, the PEREGRINE is easy to service, stylish and effective, featuring European design build standards and a diffuse light output. Product code: (VECL2017)



Area coverage:	120 m <sup>2</sup>
Light source:	3 x 15 W shatterproof ASTRON UV-A lamps
Catch type:	Temperature optimised glueboard
Lamp life time:	17,500 hrs
Protection rating:	IP 21 (drip-proof)
Dimensions (LxWxD):	470 x 325 x 100 mm
Mounting position:	Ceiling and wall mounted
Product Code:	VECL1027



# VECTOTHOR™



FLYING INSECT CONTROL LIGHT TRAPS

## ASTRON™ ECO-LED LAMPS

LIGHTING UP THE FUTURE FOR INSECT CONTROL

### VECTOTHOR DYNAMIC OSCILLATION PULSE TECHNOLOGY™

This unique technology is essential to provide fly trapping performance equal to, or better than, that provided by fluorescent lamp fly trap models.

A highly proprietary logarithm has been developed to cause fluctuations in the light beam that are imperceptible by people, but that greatly influence and improve fly catch rates.

Early in the development process of producing high-performance LED lamp, it became clear that since, unlike fluorescent lamp, LED lights produce

a constant flow of light; fly landing behaviour was negatively impacted by LED lights and, as a direct consequence, kill rates were reduced. This led to the development of our VECTOTHOR Dynamic Oscillation Pulse Technology™ to provide class leading fly killing performance.

**Environmentally Responsible:**  
 Use 50% less power than traditional models, with big savings in energy bills



### TECHNICAL DATA 15 WATT ASTRON LED HF UV-A LAMP

The ASTRON 15 Watt LED UV lamp offers the same UV-A output as a traditional 15 Watt UV-A lamp, but does it with approx. 50% of the incoming power. This offers huge cost savings. And with a lifetime of over 3 years, the impact on the environment is significantly lower.

And of course, the lamp meets the strict quality controls of Ensystex and meets all relevant standards.

Technical name		ASTRON LED 15 Watt LED HF UV lamp	
Power consumption (W):	8	Shatterproof lamp sleeve:	YES
UV-A power (W):	2.7	RoHS compliant:	YES
Lifetime (hr):	20,000	EN 60335 2.59 compliant:	YES
		Wavelength emission:	340 - 450 nm
		Energy saving per lamp / year:	61.33 kW at continuous usage

## RESIDENTIAL / PROFESSIONAL UNITS



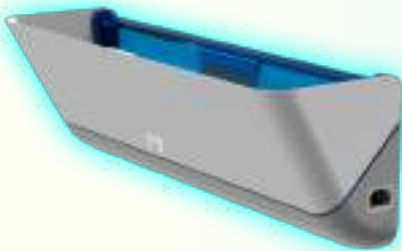
### VECTOTHOR OSPREY LED

2 x 15 W ASTRON LED lamps covers 100+ sq m.

#### TECHNICAL SPECIFICATIONS

Catch specifications: Temperature optimised glueboard with silicone paper cover  
Weight: approx. 4 kg with light tubes fitted  
Material: Coated steel casing, cover/grid ABS plastic

Guarantee: Two (2) years  
Dimensions (LxWxD): 470 x 325 x 100 mm



### VECTOTHOR FALCON LED

1 x 15 W lamps covers 60+ sq m.

#### TECHNICAL SPECIFICATIONS

Area coverage: 60+ m<sup>2</sup>  
Catch specifications: Temperature optimised glueboard with silicone paper cover  
Weight: approx. 4 kg with light tube fitted  
Material: Powder coated metal

Guarantee: Two (2) years  
Dimensions (LxWxD): 700 x 180 x 150 mm

THE RANGE THAT'S LIGHTING THE FUTURE  
OF FLY CONTROL, USING VECTOTHOR'S  
**DYNAMIC OSCILLATION PULSE TECHNOLOGY™**



### VECTOTHOR PEREGRINE<sup>3</sup> LED

3 x 15 W ASTRON LED lamps covers 150+ sq m.

#### TECHNICAL SPECIFICATIONS

Catch specifications: Temperature optimised glueboard with silicone paper cover  
Weight: approx. 6 kg with light tubes fitted  
Material: Coated steel casing, cover/grid ABS plastic

Guarantee: Two (2) years  
Dimensions (LxWxD): 520 x 150 x 365 mm



### VECTOTHOR BUZZARD LED

2 x 15 W lamps covers 100+ sq m.

Catch specifications: Temperature optimised glueboard with silicone paper cover  
Weight: approx. 4 kg with light tubes fitted  
Material: Coated steel casing, cover/grid ABS plastic

Guarantee: Two (2) years  
Dimensions (LxWxD): 520 x 150 x 365 mm

## INDUSTRIAL / LARGE COMMERCIAL

# INSECT BAIT STATIONS

Chemical free Professional Pest Management monitoring systems.



## HYMENOPTHOR ANT BAIT STATION



### Durable device for easy mounting

The unique slide mounting system makes the HYMENOPTHOR Ant Bait Station very easy to service, while user selectable insect entry points ensure versatility regardless of the station location. Moulded from food grade polypropylene, these rugged, reusable Stations come complete with a self adhesive strip for the 'slide-mount' backing plate or a zip tie option allowing for any required mounting situation. Product Code: (CHEHY1000)

## BLATTATHOR COCKROACH TRAP



### Attractive, disposable cardboard trap

Has a low profile making it easy to place in a variety of situations. Each BLATTATHOR Cockroach Trap is versatile and can be used as either a single large Trap, in areas of higher infestation, or it can be separated to form three small Monitor Traps, allowing you the opportunity to make more placements, which is particularly useful when monitoring to determine the effectiveness of your control program.

The attractants are incorporated into the glue, to better suit the requirements of HACCP. However, the release technology and attractants used ensures they keep attracting cockroaches and stored product insects for a good three months or more. The glue board will catch and retain nymphs and adults of all important cockroach pest species, including *Periplaneta* species.

Product Code: (CHEBT1000)

## BLATTATHOR COCKROACH / INSECT MONITOR



### Heavy-duty Reuseable Monitor with Glueboard.

Designed for use in any position, even on its side, or upside down in a cupboard. Angled entry ramps ensure insects enter first time. This re-usable Monitor can be used again and again, in fact we recommend it. The glueboard will catch and retain nymphs and adults of all important cockroach pest species, including *Periplaneta* species. During routine services the glueboard is easily replaced.

When cockroaches gather they release pheromones which attract even more cockroaches. These natural aggregation pheromones account for a complex cocktail of more than 100 chemicals, so mimicking this effect is almost impossible. Research shows that cockroach deposits are the main repository for the pheromones and they continue to be attractive for a year or more.

The **BLATTATHOR Insect Monitor** ensures that by replacing only the glue board these very effective, natural aggregation pheromones remain; so you have the dual action of a powerful lure combined with the additional attractiveness of natural pheromones.

Product Code: (CHEBI1000)

# DUAL POWERLIGHT

## RECHARGEABLE DUAL FLASHLIGHT - UV-A / WHITE LIGHT

The most powerful flashlight available for the pest control industry offering white light and UV-A light.

The powerful white light is ideal for all your professional inspection needs, whilst the second UV-A light is perfect for scorpions, rodent inspections, to reveal urine stains, and bed bug treatments to reveal the presence of eggs.

This torch is as rugged as they come, protected against water immersion to 1 m, drops from 1.5 m, scratch-proof, temperature-resistant to 100 degrees Celsius and manufactured to ISO9001 - this is a torch for professionals.

Contents:

### DUAL POWERLIGHT

- Li-ion rechargeable battery
- Multi-charger for mains or in-car charging
- Belt holster

Code: VECD1000 (DUAL POWERLIGHT), VECD1001 (Li-ion Battery)



Specification	
Light Source	5 W white Cree LED XPG2 + 5 W UV-A LED
Battery	18650 Li-ion rechargeable battery
Specs	Rated for 20,000 hours (5 years)
Brightness	300 lumens
Working time	5-6 hours
Night Reflector	Green Strip lights up in the dark
Weight	184 g
Colour	Black
IP Rating	IPX8 - Protected against water submersion
Body	Aluminum T6061, Premium Type III hard-anodized abrasive finish; scratch-proof.
Electrical supply charger	110-240 V / 50-60 Hz
Dimensions	150 x 35 mm (L x D)

# ACCUTHOR GEL GUN

**HIGH PERFORMANCE,  
ADJUSTABLE, STAINLESS  
STEEL GEL GUN**



The uniquely designed ACCUTHOR Gel Gun sucks the gel out of your gel tubes, ensuring a more accurate distribution and NO dripping.

The ACCUTHOR Gel Gun is fully adjustable so you can control the amount of product dispensed, and it comes complete with a range of different tip sizes to give you total control over droplet sizes. It is a rugged design, constructed from stainless steel to give you many years of accurate use when used with 30 g or 35 g classic professional gel tubes, 5 positions for accurate dosage are available to give you just the right amount of gel for the treatment, ensuring the most precise and cost-effective placement.

Product Code: (EQPA1000)

## ACCUTHOR DUSTERS



### ACCUTHOR™ PRECISION APPLICATOR

The ACCUTHOR Precision Applicator is designed for use with MAGNATHOR Magnetic Insecticide to lightly apply the MAGNATHOR Magnetic Insecticide into the smallest cracks and crevices. A range of optional accessories are also available including a belt pouch, and an extension tube with nozzle.

Product Code: (EQPA2000)



### ACCUTHOR™ BULB DUSTER

The ACCUTHOR Bulb Duster is a large rugged hand duster ideal for your day to day application of dust products. Can even be used upside down!

Product Code: (EQPD1003)



### ACCUTHOR™ GRANULE APPLICATOR

The ACCUTHOR Granule Duster is just perfect for applying HYMENOPTHOR Granular Ant Bait

Product Code: (EQPD1001)

# BIRCHMEIER®

## BIRCHMEIER APPLICATION EQUIPMENT

Ensystex is the exclusive agent for Birchmeier in Australia.

Since 1876 Birchmeier has been manufacturing high quality sprayers, foamers and dispensers for professionals. Innovative, functional and durable quality for demanding users.

Made in Switzerland we have a common commitment to deliver quality and reliability.

We guarantee the supply of spare parts for up to 10 years, so our customers are sure to benefit long-term from the quality of Ensystex Birchmeier products. Comprehensive range of spare parts and accessories for optimum operation and maximum service life.

And our Accu-Power Range offers quiet power and zero emissions, and there is no need to carry fuel in your vehicle any more! The latest Lithium Ion Battery Technology gives you unmatched power output, long running times, and quick recharging. And all of them are made with a smart pressure control.

### Spraying



#### Iris 15

Professional backpack sprayer with externally mounted piston pump, robust in every detail (6 bar)



#### Profi Star 5

Professional compression sprayer for general use with Viton seals (4 bar)



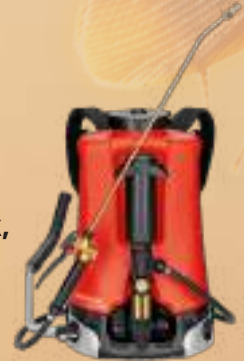
#### Spray-Matic 5 S

Stainless steel compression sprayer with powerful brass pump and large separate filling opening (6 bar)



#### Flox 10 AT3

When the best gets even better, with an ergonomically shaped tank, padded S-shaped carrying belt with click system and a new pump lever system



#### RPD 15 ATS

The backpack sprayer - easy, handy, redefined ergonomics with foldable non-drip pump



### Dispensing

#### Aquamix 1,25V

Fertilizer mixing unit for liquid fertilising without a watering can.



Additional accessories and spare parts available

The nozzle plays a key role. Using the right nozzle saves spray solution, time and makes treatments more effective



Adjustable nozzle



Duro mist nozzle 0.8 mm - 1.65 mm



Fanjet nozzle

## Foaming

### Foam-Matic 5 P

Mobile and high performance top compression foam - 5 L sprayer (4 bar)



### Foam-Matic 1.25 P

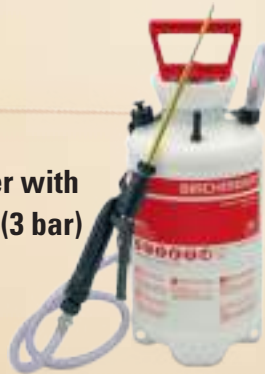
Mobile foaming with excellent foam quality - 1.25 L



## Dusting

### DR 5

Professional powder duster with compressed air connector (3 bar)



### Bobby 0.5

The handy powder duster for houses, gardens and farm



## Fuelling

### Super Star 1.25 / 360°

The small, handy compression sprayer with swing 360 (degree symbol), adjustable brass nozzle and transparent plastic 1.25 L tank with protected safety & relief valve



### Rapidon 6

Refuelling at your fingertips: fast, easy and convenient



## Spreading

### Granomax 5

Fertiliser- and salt spreader with dosage control



### XL 8

The ultimate 7 m extension lance for dusting and spraying



## Accessories

Extension tube 26 cm bendable for Super Star 1.25



Mini-Flex: The flexible extension for dusting and spraying



Made in Switzerland

## The zero emission and quiet «Accu-Power» line for professionals

For every application the suitable battery sprayer. All are made with a smart pressure control.



All backpack sprayers

- 15 L
- 1 – 4.5 bar
- 0.3 – 1.3 L / min<sup>1</sup>
- 14.4 V / 2.25 Ah



**REB 15**

- 15 L
- 0.5 – 6 bar
- 0.3 – 1.5 L / min<sup>1</sup>
- 18 V / 3 Ah



**REC 15**

- 15 L
- 1 – 10 bar
- 1.0 – 2.8 L / min<sup>1</sup>
- 25.2 V / 8.7 Ah



**REX 15**

- 50 L mobile, quick-change battery (1-10 bar)
- 1.2 – 3.3 L / min<sup>1</sup>
- 25.2 V / 8.7 Ah



**Accu-Power A50**

- Mobile 75 / 130 L battery power (1-10 bar)



**Accu-Power A75 and A130**

- 15 L
- 1 - 3 bar
- 10 h / 190 L
- 14.4 V / 2.25 Ah



**REA 15**

### Real work comfort

- Zero emission
- Quiet and less vibrations
- Comfortable engine starting (no starter)
- Low operating costs (no use of petrol)
- No petrol storage necessary
- Optimum comfort due to ergonomic design (backpack sprayers)

Traditional Birchmeier quality with robust, high-end performance and with a wide range of accessories

### Electronic control

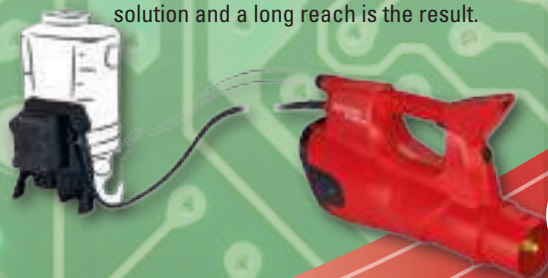
- Intelligent pressure control
- Operating pressure adjustable (continuously)
- Energy efficient
- Protective setup for pump and rechargeable battery
- Up to 3.5 hours of operation
- 25.2 V / 9.8 Ah Li-ion battery
- Adjustable airspeeds up to 65 m/s
- Up to 13 metres in range
- Low noise emission
- High energy efficiency

### AS 1200 – Battery spray blower

#### Spraying with even greater efficiency

#### Air-supported spraying with «Accu-Power»

The new technology from Birchmeier. A new dimension to plant protection: Spraying with pressure-controlled liquid supply in an air stream. A large spraying range can be achieved with pre-spraying and a variable air stream. A minimum loss of spray solution and a long reach is the result.



<sup>1</sup> Performance characteristics min / max with fittings of delivery

<sup>2</sup> Performance characteristics min / max without fittings



## BM 1035 «Accu-Power» pump station for all kinds of uses

Accu-Power BM 1035 Pump Station including battery and charger. Replaces the motorised pump on your vehicle. No petrol required.

The powerful BM 1035 with Li-Ion battery is easy and simple to use with its suction hose that can be connected to virtually any tank system. A zero-emission and quiet power unit with a maximum flow rate of 5.5 litres per minute and an adjustable operating pressure level up to 10 bar. The proven electronic pressure control with an integrated and hydraulic built-in agitator allows ultimate comfort.

**OUT**

**IN**

**MIX**

**Unique Birchmeier features**

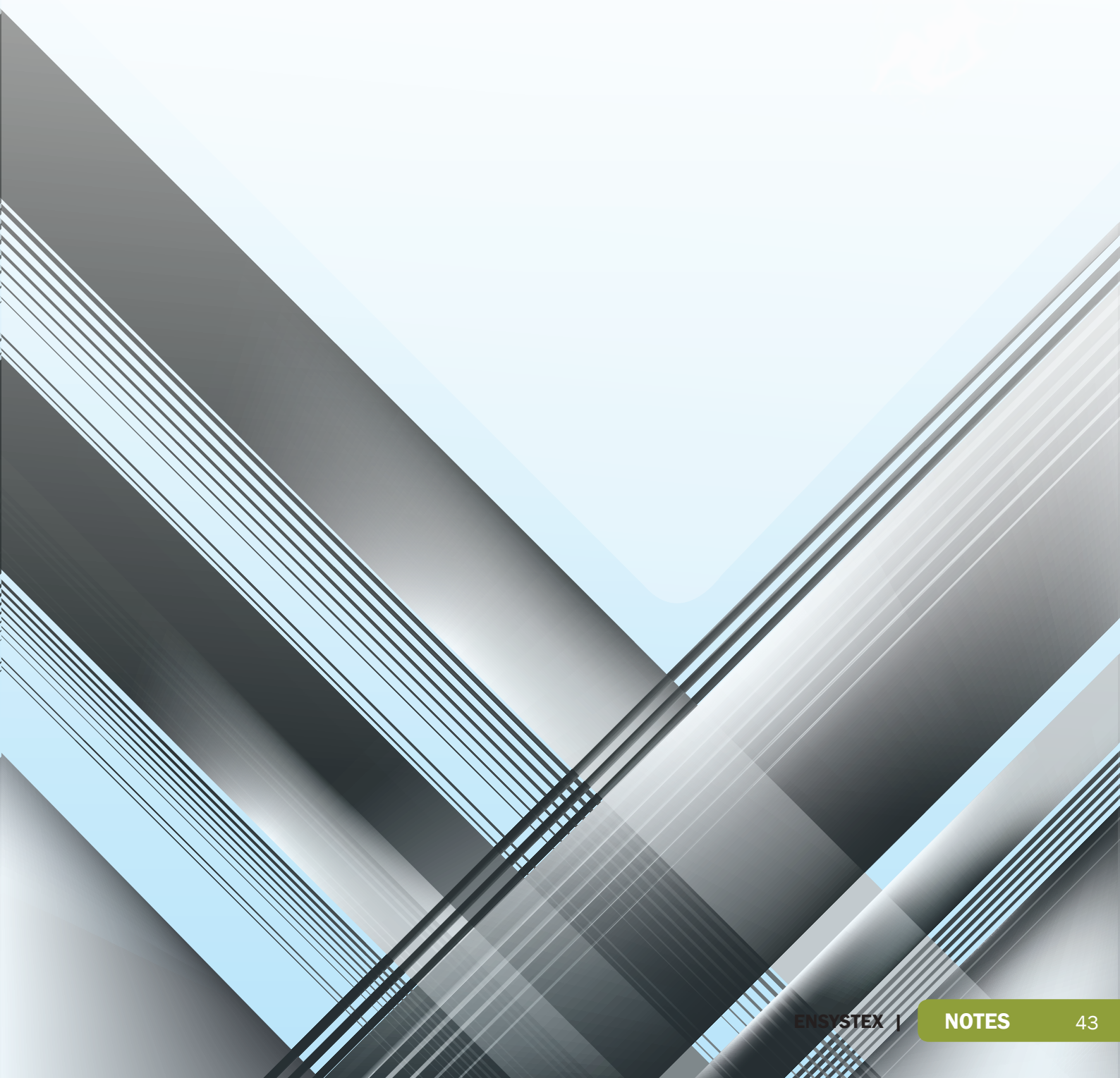
- Intelligent pressure control
- Continuously adjustable operating pressure
- Energy efficient due to electronic control
- Protective setup for pump and battery

**CO<sub>2</sub>**

**Performance characteristic**

- Maximum flow rate 5.5 L / min
- Pressure range of 1 – 10 bar
- Li-Ion battery capacity with 220 Wh
- Battery performance up to 14.5 h / 1300 L
- Battery charging time less than 2.5 hrs

# NOTES





# ENSYSTEX™

LEADING INNOVATION IN PEST MANAGEMENT

**Ensystemex South Africa (Pty) Ltd**

Company Reg. No. 2008/009219/07

**Building 3, The Burns Business Park,  
12A Jet Park Road, Jet Park,  
Boksburg, 1469**

**Call 080 ENSYSTEX (080 367 9783)**

**[www.ensystemex.co.za](http://www.ensystemex.co.za)  
[za\\_client@ensystemex.com](mailto:za_client@ensystemex.com)**

BROA3005 2.03 07.19

™ Trademarks of Ensystemex Inc. used under licence by Ensystemex South Africa